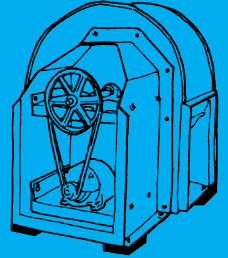
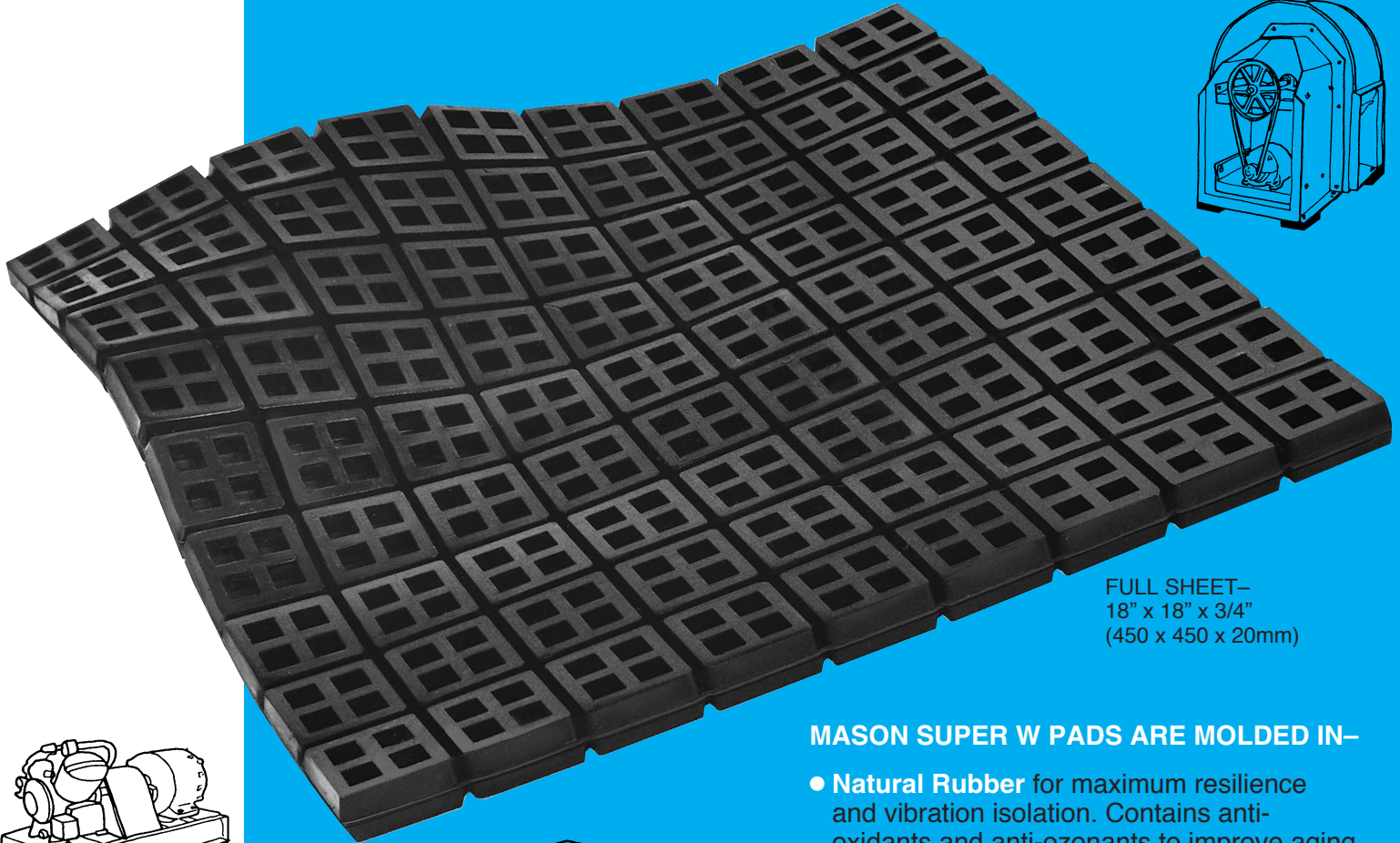
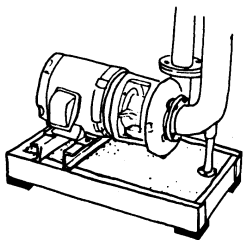
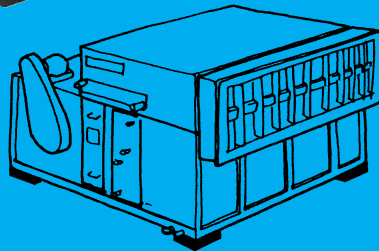
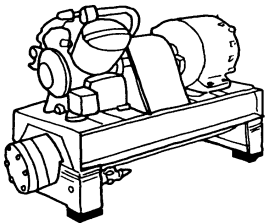




# MASON SUPER W PADS



FULL SHEET—  
18" x 18" x 3/4"  
(450 x 450 x 20mm)



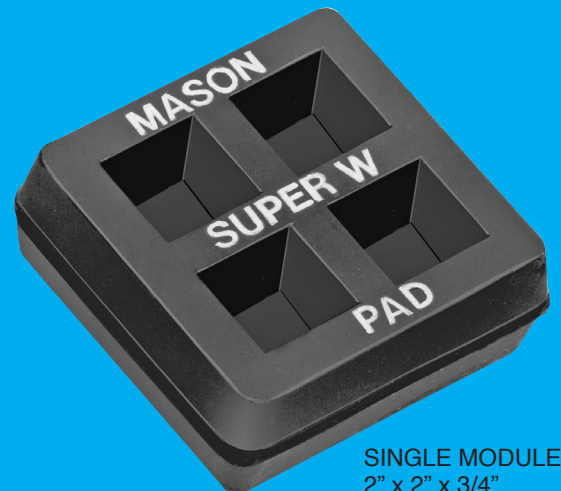
## MASON SUPER W PADS ARE MOLDED IN—

- **Natural Rubber** for maximum resilience and vibration isolation. Contains anti-oxidants and anti-ozonants to improve aging.
- **Standard Neoprene** for longer life and moderate oil resistance.
- **Bridge-bearing Neoprene** for maximum life, excellent oil resistance and resiliency approaching natural rubber.

Standard size 18" x 18" x 3/4" (450 x 450 x 20mm) consists of 81 - 2" (50mm) modules. The 2" (50mm) squares are separated by a thin web that is easily cut to provide evenly dimensioned pads such as 2" x 2" (50 x 50mm), 2" x 4" (50 x 100mm), 4" x 4" (100 x 100mm), 6" x 8" (150 x 200 mm), etc. Our Super W pad is one of the thickest, most versatile and efficient pads on the market.

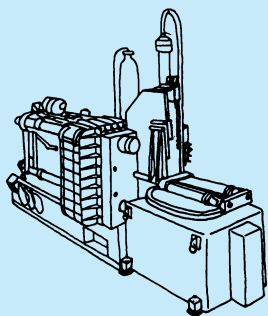
### METRIC EQUIVALENTS

18" x 18" x 3/4" = 450 x 450 x 20mm  
 2" x 2" x 3/4" = 50 x 50 x 20mm  
 2" x 4" x 3/4" = 50 x 100 x 20mm  
 4" x 4" x 3/4" = 100 x 100 x 20mm  
 6" x 8" x 3/4" = 150 x 200 x 20mm

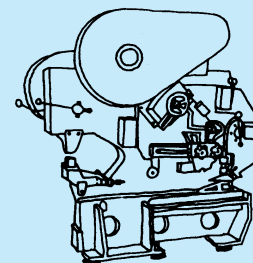
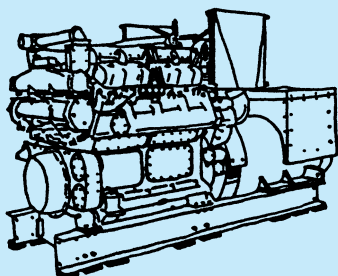
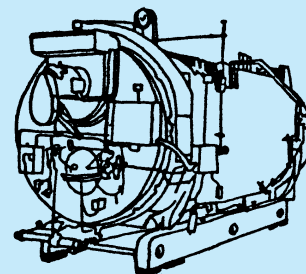


SINGLE MODULE—  
2" x 2" x 3/4"  
(50 x 50 x 20mm)

Pads can be used to reduce noise, high frequency vibration and impact from typical machines as follows:



- Chillers
- Compressors
- HVAC Units
- Vent Sets
- Pumps
- Motor Generators
- Transformers
- Diesel Generators
- Punch Presses
- Lathes
- Saws
- Power Presses
- Drill Presses



Super W Pads should be used in full squares. Select the minimum number of squares required and design pad to the most convenient square or rectangle. The use of additional squares results in more conservative loading.

**British Units Example—**

Load is 980 lbs. 50 Duro capacity is 180 lbs.  
 $980/180 = 5.44$  squares (Use 6 square modules).  
 Pad may be 2 modules x 3 modules (4" x 6")  
 or 1 module x 6 modules (2" x 12")

**Metric Units Example—**

Load is 5000 kgs. 50 Duro capacity is 80 kgs.  
 $5000/80 = 62.5$  squares (minimum).  
 Pad may be 8 modules x 8 modules (400 x 400mm)  
 or 7 modules x 10 modules (350 x 500mm)  
 or 6 modules x 11 modules (300 x 550mm) etc.

**SUPER W  
LOAD RATINGS PER SQUARE**

DUROMETER	15% DEFLECTION	
	Load per 2" x 2" Square (lbs)	Load per 50x50mm Square (kgs)
30	80	35
40	120	53
<b>Standard 50</b>	<b>180</b>	<b>80</b>
60	240	105
70	360	158

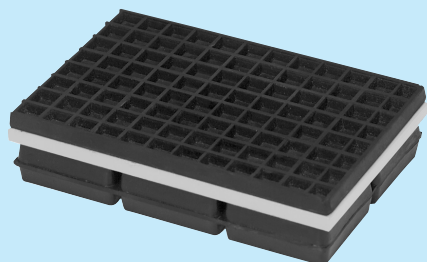


PADS MAY BE STACKED WITH 16 GAUGE (1.6MM) SHIMS BETWEEN LAYERS FOR INCREASED DEFLECTION.

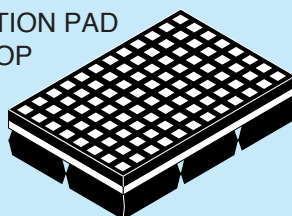
## WMSW and MBSW PAD ASSEMBLIES

When there is a concentrated load because of a small leg on a heavy machine or a formed sheet metal leg without a bottom surface, you can always cut a pad to size and cement your own steel plate on top. Usually it is more convenient to buy them, so we offer two types. The WMSW has the cemented steel plate

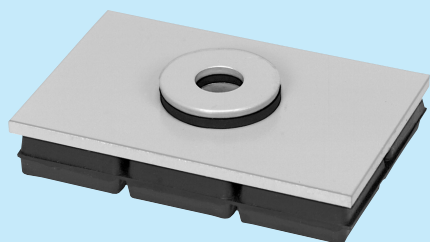
sandwiched between a super waffle pad on the bottom and a 1/4" friction pad on the top. No bolting required. The MBSW replaces the friction pad on top with a 3/4" diameter center hole for bolting through. We provide a 3/4" neoprene isolation washer cemented to a steel washer as well.



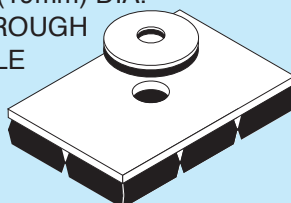
FRICITION PAD ON TOP



WMSW



3/4" (19mm) DIA. THROUGH HOLE



MBSW

Type	Size		Max. Load (lbs) (kgs)
	(inches)	(mm)	
WMSW-	4 x 4 x 1 1/4	100 x 100 x 32	800 <b>363</b>
	6 x 4 x 1 1/4	150 x 100 x 32	1200 <b>544</b>
	6 x 6 x 1 1/4	150 x 150 x 32	1800 <b>816</b>
	8 x 8 x 1 1/4	200 x 200 x 32	3200 <b>1452</b>
	10 x 10 x 1 1/4	250 x 250 x 32	5000 <b>2268</b>
	10 x 12 x 1 1/4	250 x 300 x 32	6000 <b>2722</b>
MBSW-	4 x 4 x 1	100 x 100 x 25	800 <b>363</b>
	6 x 4 x 1	150 x 100 x 25	1200 <b>544</b>
	6 x 6 x 1	150 x 150 x 25	1800 <b>816</b>
	8 x 8 x 1	200 x 200 x 25	3200 <b>1452</b>
	10 x 10 x 1	250 x 250 x 25	5000 <b>2268</b>
	10 x 12 x 1	250 x 300 x 25	6000 <b>2722</b>

Special Sizes on Request



# MASON INDUSTRIES, INC.

350 Rabro Drive, Hauppauge, NY 11788 • 631/348-0282 • FAX 631/348-0279  
 2101 W. Crescent Ave., Suite D, Anaheim, CA 92801 • 714/535-2727 • FAX 714/535-5738  
 Email info@Mason-Ind.com or info@MasonAnaheim.com • Website www.Mason-Ind.com